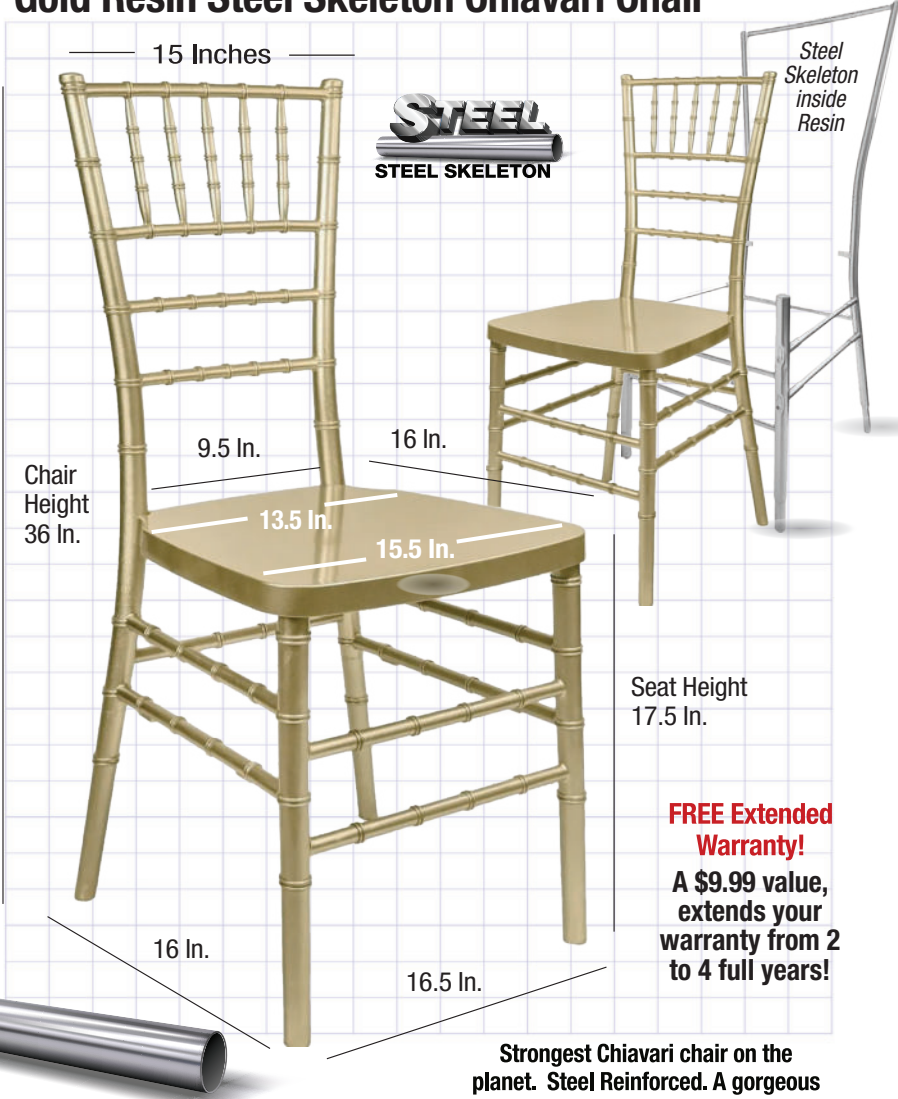


# Gold Resin Steel Skeleton Chiavari Chair



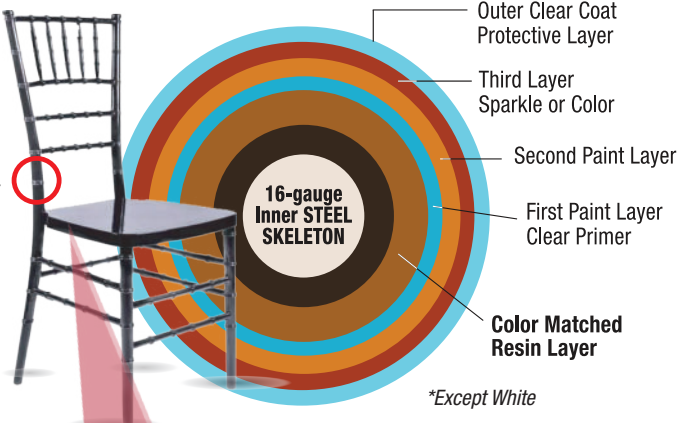
**FREE Extended Warranty!**  
**A \$9.99 value, extends your warranty from 2 to 4 full years!**

**Strongest Chiavari chair on the planet. Steel Reinforced. A gorgeous chair built like a tank!**

## Inside the Steel Skeleton:

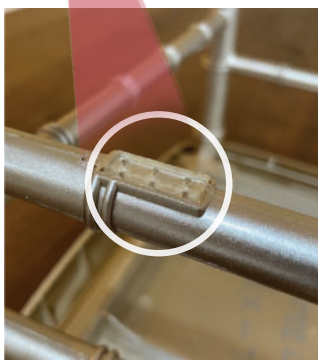
This cross section shows an indestructible 16-gauge Steel Skeleton, "Best In Class Steel" wrapped in resin, finished with 4 coats of high-quality automotive paint protection.

All the extra steps and care in manufacturing adds up to the most beautiful chair ever.



## Safe Stacking with Our Protective Pad System

Avoid chipping, scratches or other damage during setup and take down.



## Stack our chairs easily and safely.

Stack our chairs easily and safely. Our Steel Skeleton chairs include a series of "pads" on the bottom of the lower rung that protects against scratches and chipping when stacking. These pads also help our chairs stack straight.

## Product Details

Color	Gold
Weight Capacity	800 Lbs
Limited Warranty	Extended from 2 to 4 Years
Commercial Grade	Yes
Material Category	Highest-Quality NEW Resin
Stack Capacity	10
Ships Assembled?	Yes
Arms?	No
Chair Weight	11.5 Lbs.
Overall Dimensions	16 x 16.5 x 36
Chair Height	36 in.
Seat Height	17.5 in.
Seat Width/Depth	15.5 in./16 in.
Units Per Pallet	48
Units Per Box	8
Country of Origin	China

## Safety, Materials and Construction

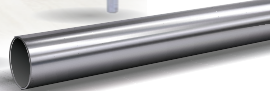
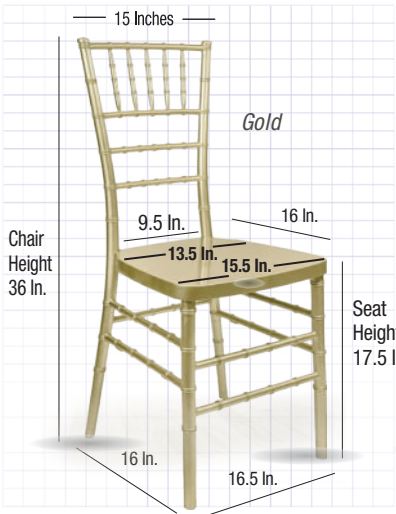
Safety Standards	Meets/exceeds ANSI/BIFMA standards
Frame Material	Highest quality steel and resin
Finish	Non-stick, anti-static
Automotive Paint	UV Treated Formula <b>Exclusive!</b>
Layers of Paint	4

## What Makes Our Chair Different?

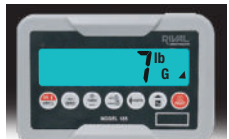
<b>Reinforced Steel Skeleton</b>	A 16-gauge steel skeleton is what makes our Chiavari chairs stronger and more resilient than other chairs.
<b>Color-Matching Resin</b>	Our inner resin core matches the paint color -- so even tough scratches are virtually invisible.
<b>Clear Coat Primer</b>	We apply a clear coat primer and allow it to cure, ensuring a hard and resilient foundation.
<b>Automotive Paint</b>	For that exquisite, glossy finish, we employ automotive paint, known for its durability and deep luster.*
<b>Final Clear Coat</b>	The finishing touch: An automotive shine! We apply a final clear coat to safeguard the integrity of the paint.

*\*Except White*

# Our Resin Inner Steel Skeleton Chiavari Chair Collection



## Strength, Durability and Beauty



Basic Resin Weight: 7 lbs.



ToughResin Weight: 10 lbs.



ToughWood Weight: 9 lbs.



Steel Skeleton Weight: 11.5 lbs.

**Heavier, stronger.** Our Steel Skeleton chair is our strongest because it is our heaviest. A truly heavy duty chair with up to 800 lb. weight capacity.

## Protective Covers, Dollies and Carts



Stack our chairs easily and safely. Our Steel Skeleton chairs include a series of "pads" on the bottom of the lower rung that protects against scratches and chipping when stacking.



No slip, no hassle stacking. Chairs stay safe and protected.



## An X-Ray View of Our Resin Steel Skeleton Chiavari Chair

### INSIDE: **X-RAY VIEW** Of Our Steel Skeleton Chair

- ◀ An actual X-RAY View of Our Steel Skeleton Chair
- ◀ Actual X-Ray images show the steel inner skeleton beneath the beautiful resin finish. This is the strongest and most durable Chiavari chair available today.
- ◀ A 16-gauge steel skeleton is what makes our Chiavari chairs stronger and more resilient than other chairs

